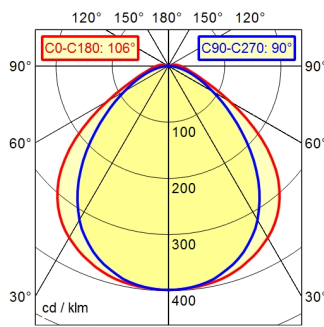


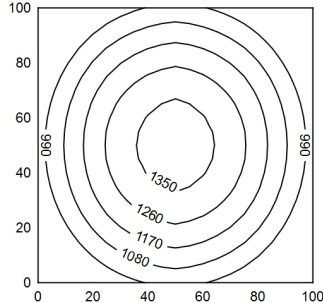
series 272

A40 98.6% ↑ 1.4%      Φ: 4400 lm



100 x 100 cm      Φ: 4400 lm

Em: 1120 lx  
 Emax: 1386 lx  
 Emin: 809 lx



light source  
 work equipment  
 connected load  
 power consumption  
 luminous flux  
 luminous efficiency  
 light distribution  
 direct ratio  
 beam angle  
 colour temperature  
 colour temperatur  
 color rendering index (CRI)  
 chromaticity tolerance LED  
 glare control  
 luminance (L65)  
 unified glare rating (4H 8H)  
 system of protection  
 class of protection  
 technology  
 operation  
 housing  
 weight (net)  
 mains lead  
 fastening  
 dimension  
 light output  
 side part  
 special features

LED  
 without  
 230V, 50/60Hz  
 env. 56 W  
 approx. 4.400 lm  
 approx. 79 lm/W  
 direct  
 approx. 99 %  
 100°  
 neutral white  
 approx. 5.000 K  
 >= 80  
 < 4 SDCM  
 diffuser foil  
 <= 17000 cd/m<sup>2</sup>  
 <= 25  
 IP 67  
 I  
 switchable  
 external  
 polycarbonate (PC), clear  
 env. 2,9 kg  
 connector; series 272  
 pipe clamp (accessory)  
 A=1070 mm  
 D=1016 mm  
 A with screwed cable gland  
 light forming