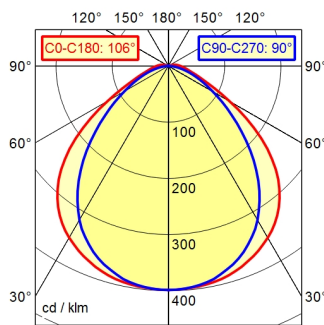


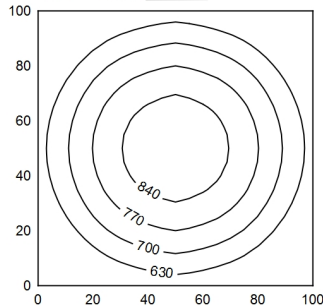
series 272

A40 98.6% ↑ 1.4% Φ: 2550 lm



100 x 100 cm Φ: 2550 lm

Em: 694 lx
Emax: 887 lx
Emin: 481 lx



light source	LED
work equipment	without
connected load	230V, 50/60Hz
power consumption	env. 32 W
luminous flux	approx. 2.550 lm
luminous efficiency	approx. 80 lm/W
light type/-color	cold white
colour temperatur	approx. 5.000 K
color rendering index	CRI > 80
light distribution	direct
direct ratio	approx. 99 %
beam angle	100°
chromaticity tolerance LED	< 4 SDCM
glare control	diffuser foil
luminance (L65)	<= 17000 cd/m ²
unified glare rating (4H 8H)	<= 25
system of protection	IP 67
class of protection	I
technology	switchable; no notice
operation	external
housing	polycarbonate (PC), clear
cover	Polycarbonate (PC)
weight (net)	env. 1,8 kg
mains lead	connector; series 272
fastening	pipe clamp (accessory)
dimension	A=650 mm
light output	D=596 mm
side part	A with screwed cable gland
special features	light forming