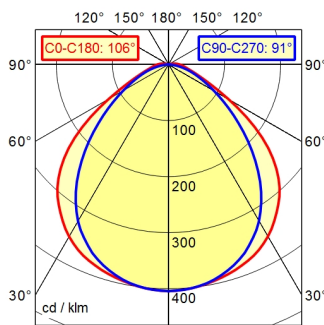


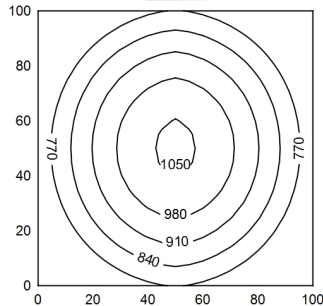
ST16/2 BS

A40 98.9% ↑ 1.1% Φ: 3300 lm



100 x 100 cm Φ: 3300 lm

Em: 847 lx  
Emax: 1054 lx  
Emin: 612 lx



- light source
- work equipment
- connected load
- power consumption
- luminous flux
- luminous efficiency
- light distribution
- direct ratio
- beam angle
- colour temperature
- colour temperatur
- color rendering index (CRI)
- chromaticity tolerance LED
- luminance (L65)
- unified glare rating (4H 8H)
- system of protection
- class of protection
- technology
- operation
- housing
- weight (net)
- mains lead
- fastening
- dimension
- light output
- side part
- special features

- LED
- without
- 22-26 V, DC
- env. 44 W
- approx. 3.300 lm
- approx. 75 lm/W
- direct
- approx. 99 %
- 100°
- neutral white
- approx. 5.000 K
- >= 80
- < 4 SDCM
- <= 14000 cd/m<sup>2</sup>
- <= 25
- IP 67
- III
- switchable
- external
- borosilicate glass
- env. 3,9 kg
- built-in plug; ST16/2 BS
- pipe clamp (accessory)
- A=1070 mm
- D=1016 mm
- A with screwed cable gland
- light forming