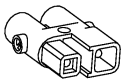




light source

- work equipment**
- connected load**
- Power consumption**
- luminous flux**
- luminous efficacy**
- light distribution**
- colour temperature**
- color rendering index (CRI)**
- System of protection**
- class of protection**
- technology**
- operation**
- luminaire body**
- weight (net)**
- mains supply**
- Fastening**
- dimension**
- light output**
- outside diameter**
- side part**
- special features**

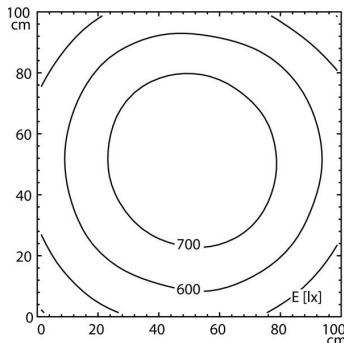
- LED
- Energy efficiency category A/A+/A++
- without
- 22-26 V; DC
- approx. 31.5 W
- approx. 2400 lm
- approx. 75 lm/W
- direct
- neutral white, approx. 5000 K
- > 80
- IP 67
- III
- switchable
- external
- borosilicate glass,
- approx. 2.8 kg
- built-in plug
- ST16/2 BS
- pipe clamp (accessory)
- A=790 mm
- D=736 mm
- 70 mm
- A with screwed cable gland
- light forming



ST16/2 BS

illuminance

distance: 100 cm
Em: 624 lx
Emax: 795 lx
Emin: 430 lx



luminous intensity

