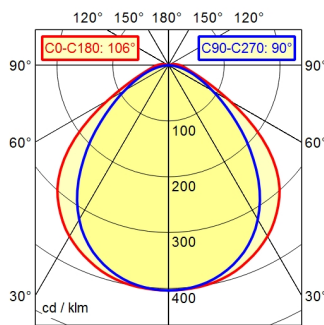
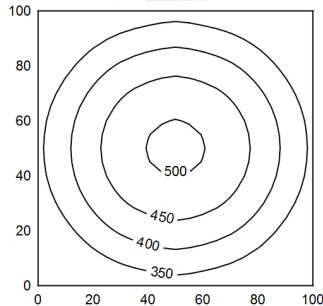


A40 98.8% ↑ 1.2% Φ: 1400 lm



100 x 100 cm Φ: 1400 lm

Em: 391 lx
Emax: 505 lx
Emin: 267 lx



- light source
- work equipment
- connected load
- power consumption
- luminous flux
- luminous efficiency
- light distribution
- direct ratio
- beam angle
- colour temperature
- colour temperatur
- color rendering index (CRI)
- chromaticity tolerance LED
- glare control
- luminance (L65)
- unified glare rating (4H 8H)
- system of protection
- class of protection
- technology
- operation
- housing
- weight (net)
- mains lead
- fastening
- dimension
- light output
- side part
- special features

- LED
- without
- 22-26 V, DC
- env. 19 W
- approx. 1.400 lm
- approx. 74 lm/W
- direct
- approx. 99 %
- 100°
- neutral white
- approx. 5.000 K
- >= 80
- < 4 SDCM
- diffuser foil
- <= 12000 cd/m²
- <= 25
- IP 67
- III
- switchable
- external
- polycarbonate (PC), clear
- env. 1,4 kg
- built-in plug; ST16/2 BS
- pipe clamp (accessory)
- A=510 mm
- D=456 mm
- A with screwed cable gland
- light forming