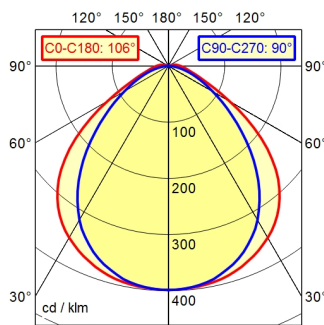


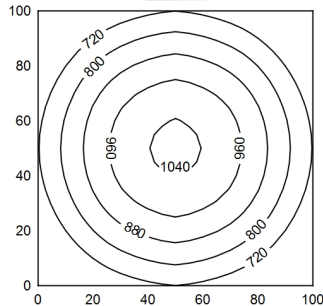
series 272

A40 98.6% ↑ 1.4% Φ: 3100 lm



100 x 100 cm Φ: 3100 lm

Em: 828 lx
Emax: 1047 lx
Emin: 580 lx



- light source
- work equipment
- connected load
- power consumption
- luminous flux
- luminous efficiency
- light distribution
- direct ratio
- beam angle
- colour temperature
- colour temperatur
- color rendering index (CRI)
- chromaticity tolerance LED
- glare control
- luminance (L65)
- unified glare rating (4H 8H)
- system of protection
- class of protection
- technology
- operation
- housing
- weight (net)
- mains lead
- fastening
- dimension
- light output
- side part
- special features

- LED
- without
- 230V, 50/60Hz
- env. 40 W
- approx. 3.100 lm
- approx. 78 lm/W
- direct
- approx. 99 %
- 100°
- neutral white
- approx. 5.000 K
- >= 80
- < 4 SDCM
- diffuser foil
- <= 17000 cd/m²
- <= 25
- IP 67
- I
- switchable
- external
- borosilicate glass
- env. 2,9 kg
- connector; series 272
- pipe clamp (accessory)
- A=790 mm
- D=736 mm
- A with screwed cable gland
- light forming